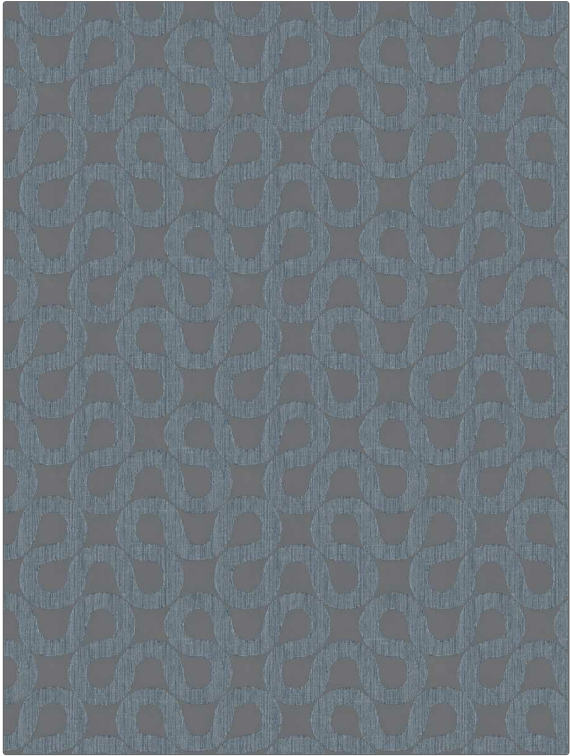


**PATTERN** Cher's Wave  
**COLOR** Slate

|  |                          |
|--|--------------------------|
| <b>BRAND</b>   | <b>APPLICATION</b>       |
| <b>Fabricut</b>  | <b>Fabric</b>            |
| <b>CATEGORIES</b>  | <b>COLORS</b>            |
| <b>Wide Width, NFPA 701 FR, Washable, Eco / Environment Plus</b> | <b>Blue, Aqua / Teal</b> |
| <b>DESIGN TYPES</b>  | <b>SCALE</b>             |
| <b>Contemporary / Modern, Scrollwork</b>                         | <b>Medium</b>            |
| <b>RAILROADED</b>  |                          |
| <b>Railroaded</b>  |                          |



|                              |  |                           |  |
|------------------------------|--|---------------------------|--|
| <b>WIDTH</b>                 | <b>VERTICAL REPEAT</b>                 | <b>HORIZONTAL REPEAT</b>  | <b>CONTENT</b>                               |
| <b>122.00 in (309.88 cm)</b> | <b>9.49 in (24.10 cm)</b>              | <b>9.33 in (23.70 cm)</b> | <b>87% Recycled Polyester, 13% Polyester</b> |
| <b>BACKING</b>               | <b>FIRE CODES</b>                      | <b>PRODUCT NUMBER</b>     | <b>COUNTRY</b>                               |
|                              | <b>Passes NFPA 701, Passes MVS 302</b> | <b>1978807</b>            | <b>India</b>                                 |
| <b>CLEANING CODES</b>        |  |                           |  |
| <b>S</b>                     |  |                           |  |

**ADDITIONAL PRODUCT NOTES**

**Oeko Tex Standard 100, Iso 14001, Ca Tb 117-2013, Passes Can / ULC-S109, Shown Railroaded, Exclusive Pattern, Din 4102 (B1), Bs 5867 Part 2 Type B & C**