

**PATTERN** Cher's Wave  
**COLOR** Linen

**BRAND**  
**Fabricut**

**APPLICATION**  
**Fabric**

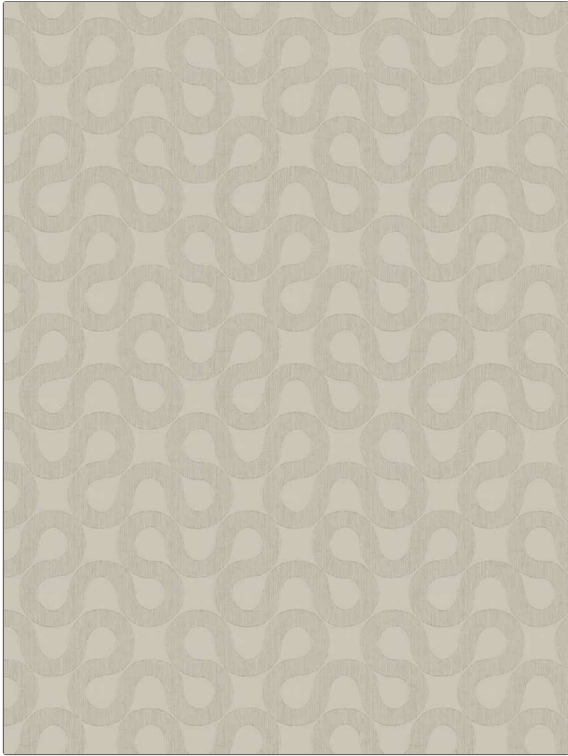
**CATEGORIES**  
**Wide Width, NFPA 701 FR, Washable, Eco / Environment Plus**

**COLORS**  
**Linen**

**DESIGN TYPES**  
**Contemporary / Modern, Scrollwork**

**SCALE**  
**Medium**

**RAILROADED**  
**Railroaded**



WIDTH	VERTICAL REPEAT	HORIZONTAL REPEAT	CONTENT
122.00 in (309.88 cm)	9.49 in (24.10 cm)	9.33 in (23.70 cm)	87% Recycled Polyester, 13% Polyester
BACKING	FIRE CODES	PRODUCT NUMBER	COUNTRY
	Passes NFPA 701, Passes MVS 302	1978805	India
CLEANING CODES			
S			

**ADDITIONAL PRODUCT NOTES**

Oeko Tex Standard 100, Iso 14001, Ca Tb 117-2013, Passes Can / ULC-S109, Shown Railroaded, Exclusive Pattern, Din 4102 (B1), Bs 5867 Part 2 Type B & C